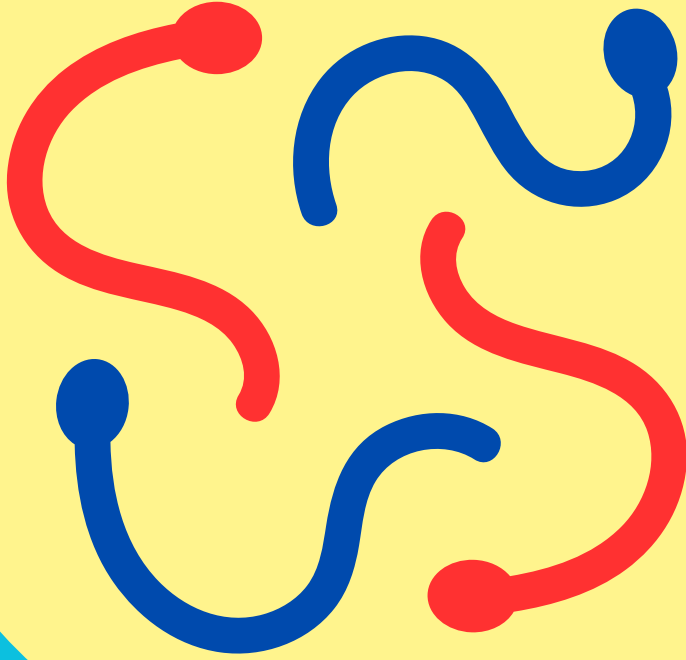
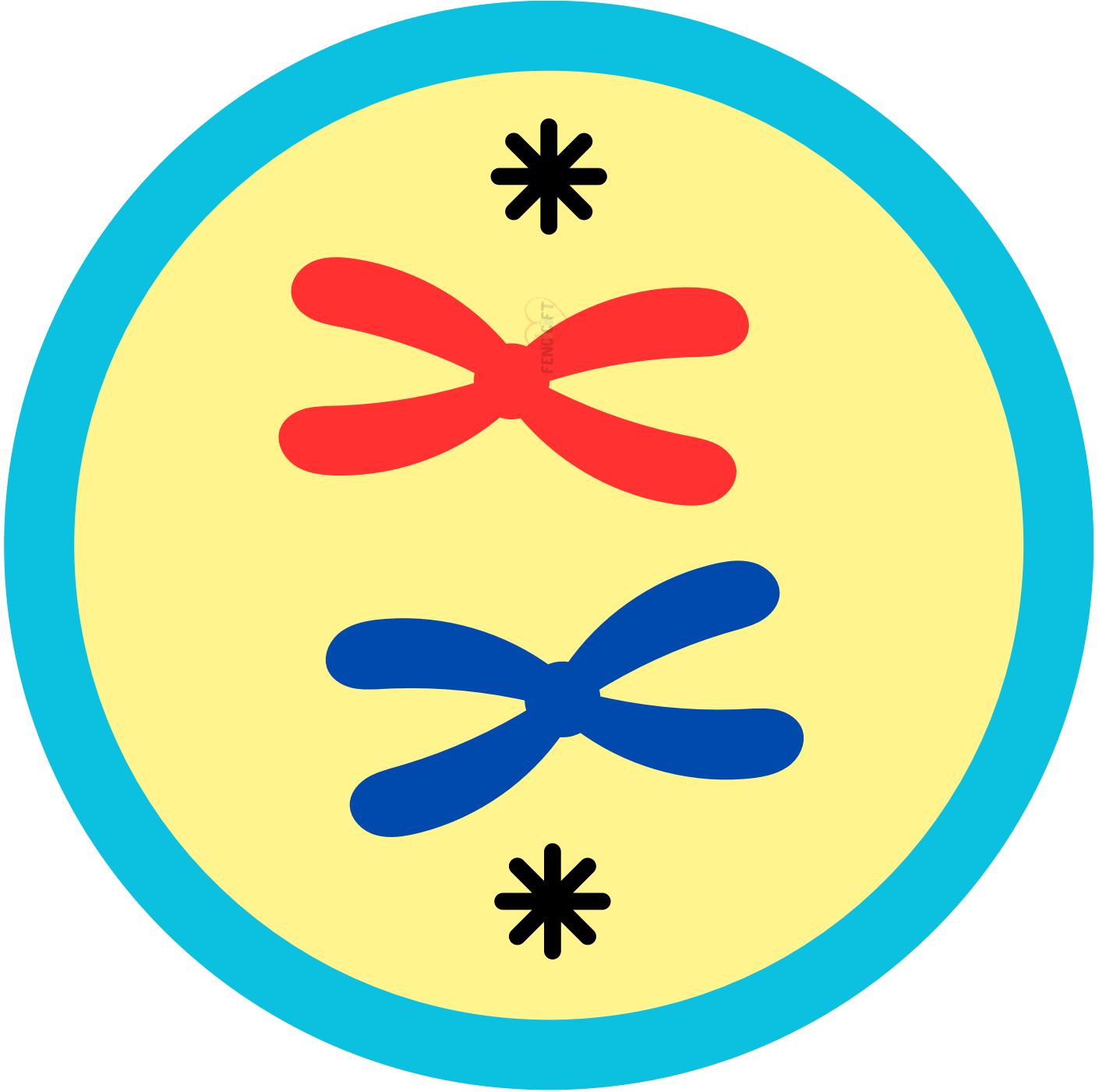
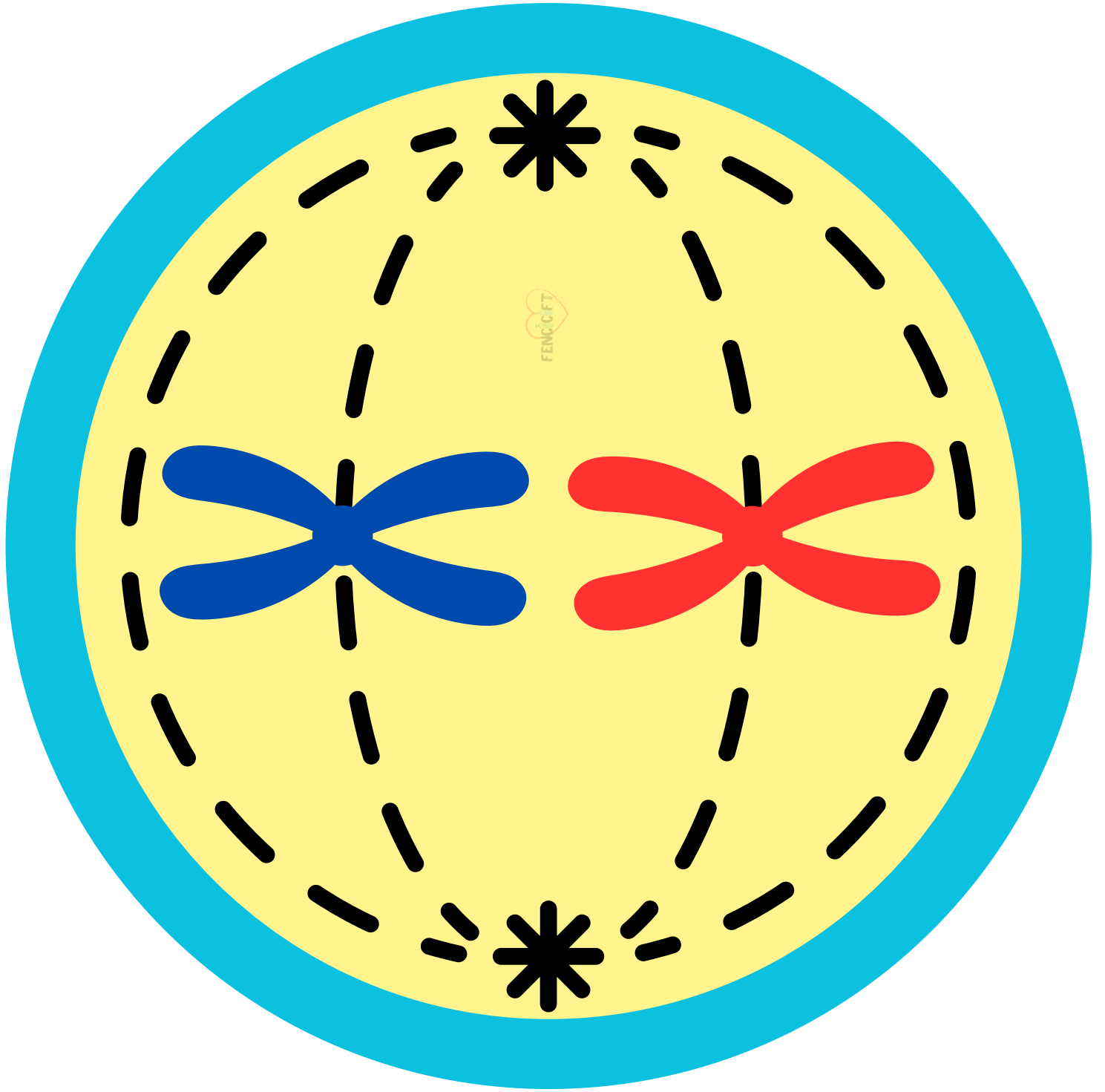


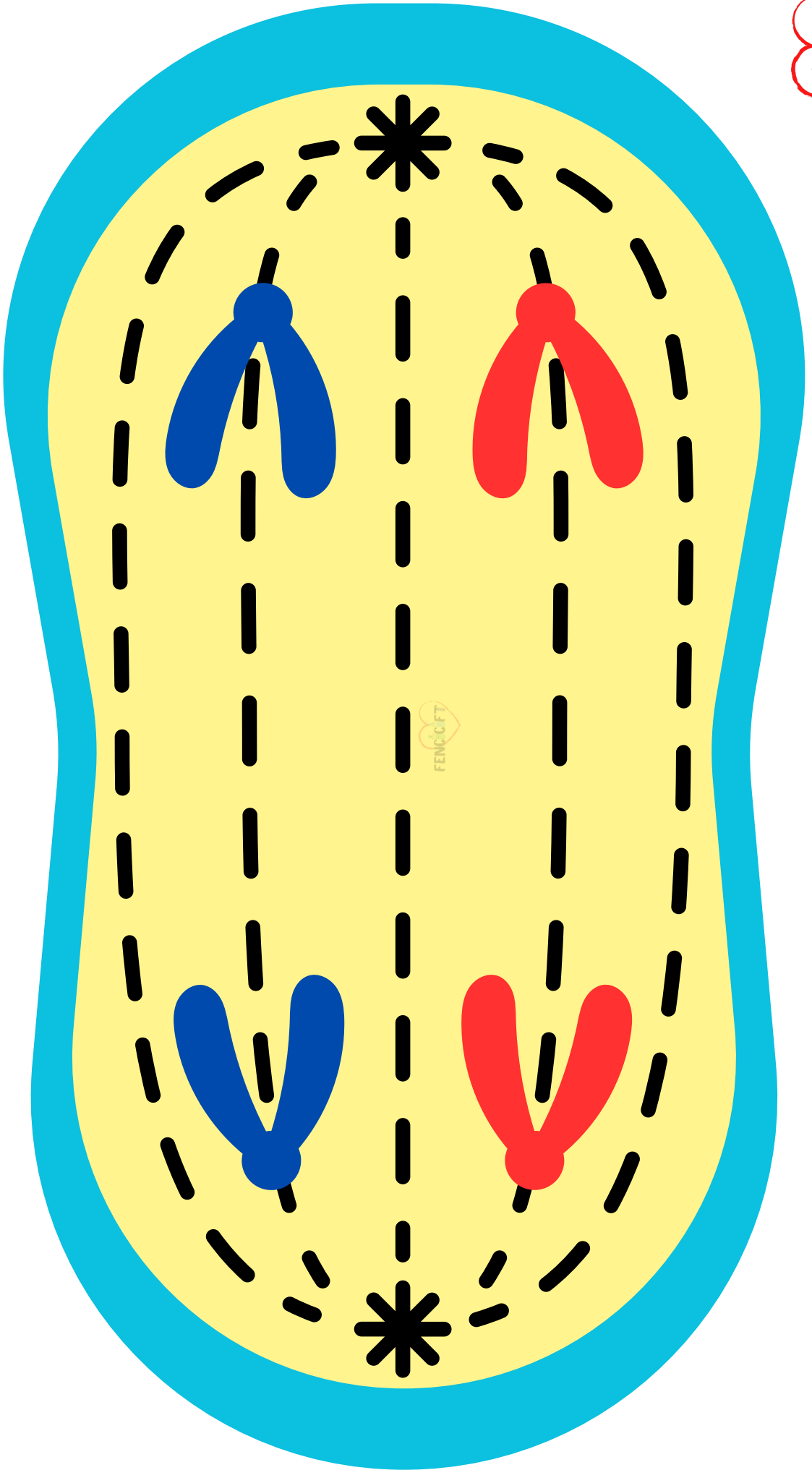


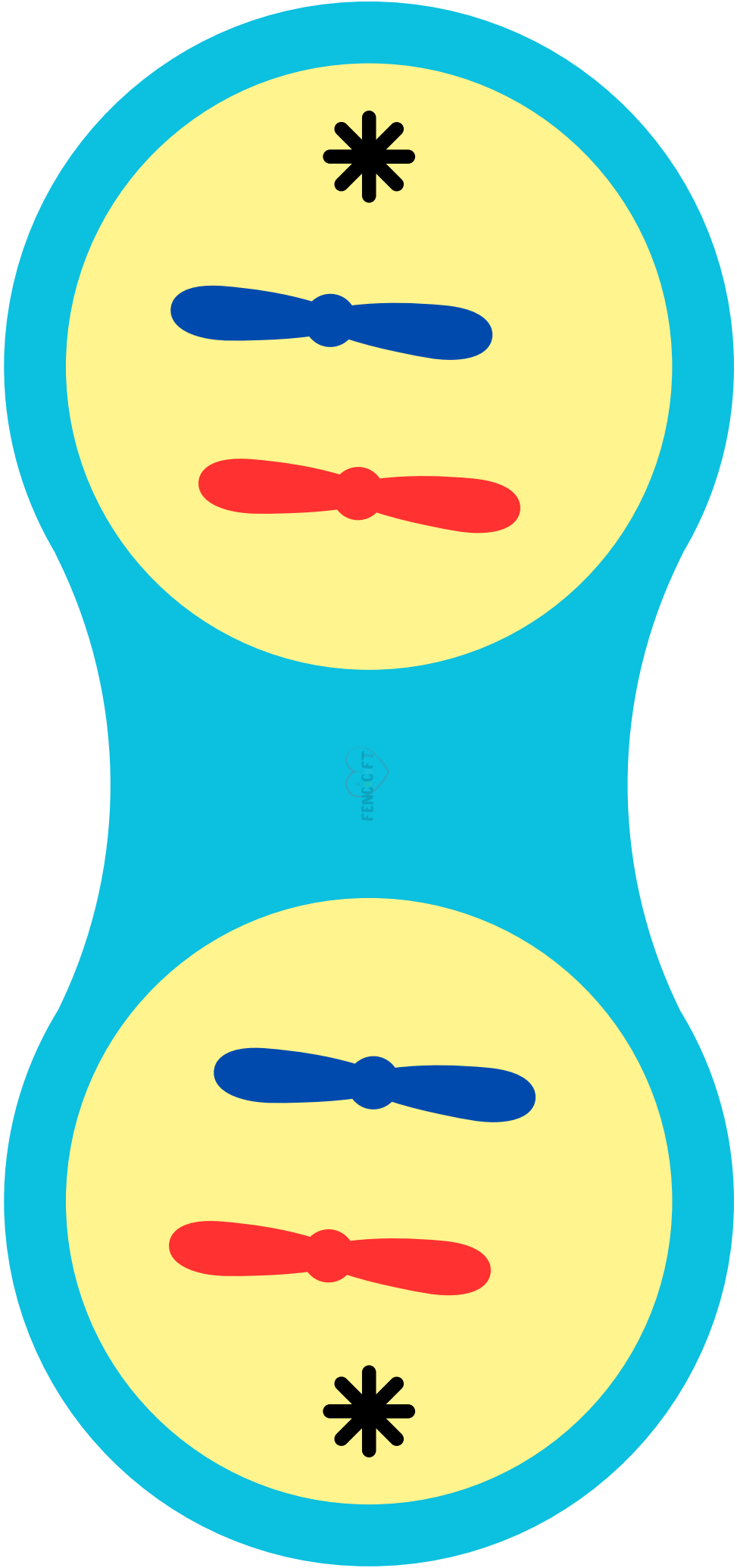
FENCIGFT









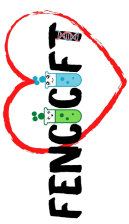




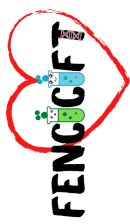
DNA VE SENTROZOM KENDİNİ EŐLER.



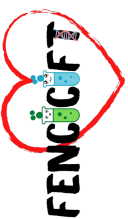
**KROMATİN İPLİKLER KISALIP KALINLAŐARAK
KROMOZOMLARA DÖNÜŐÜR.**



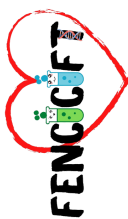
**KROMOZOMLAR HÜCRENİN ORTASINA
DİZİLİRLER.**



**KARDEŞ KROMATİDLER ZİT KUTUPLARA
ÇEKİLİR.**



**ÖNCE ÇEKİRDEK, SONRA SİTOPLAZMA
BÖLÜNÜR.**



**ANA HÜCRE İLE AYNI KALITSAL
ÖZELLİKTE 2 YAVRU HÜCRE OLUŞUR.**

